



# Your experts in mortar

Mortar made for modern designs



WE ARE YOUR  
**EXPERTS IN  
 MORTAR™**

Mortar is a key component of any building project, making up to 20% of the final building on display. It is therefore essential to select the right mortar for the job, based on both the visual and technical properties required.

Cemex has a strong history in mortar and is a leading expert in the field. We understand mortar and the factors that affect its performance.

Our team of experts has the specialist knowledge and experience to help you with everything from product choice and delivery solutions to material management and health and safety. All our mortars conform to British and European standards and are factory-produced for consistency

and reliability. We can advise on conformity to standards, strengths, colour, and working with different brick options. Our research and development centre can support you further with special mix designs, durability, and colour specifications.

**We are your Experts in mortar,  
 saving you time so you can be  
 experts in your field!**

## Contents

About mortar	4
Dry mortar solutions	6
Silo solutions	8
Bagged mortar	10
Onpoint	12
Coloured mortar	14
Specification support	17
Cemex Go	18
Vertua	20
Case study	22
Responsible sourcing	24
Production	25
Logistics and delivery	26

01 /

# About mortar

Mortar stands the test of time.

Mortar has stood the test of time as a versatile building material, used across many historic structures worldwide, from the Colosseum, to Hadrian's Wall and from the Tower of London to the regeneration of Wembley.

As the cornerstone of construction, it plays an essential role in bonding materials and creating iconic structures.

Mortar is more than just structural support for masonry. It contributes significantly to the way a building looks.



#### Colour

The colour of mortar can be used to create a striking contrast or a subtle harmony with the surrounding materials.



#### Joints

The joints between masonry units are filled with mortar. The size, shape, and colour of these joints can create a variety of visual effects.



#### Unity and weather resistance

Mortar can help to unify a masonry structure by connecting the individual elements, creating a sense of visual harmony and strength, whilst protecting masonry from the varying elements.



#### Modern aesthetics and texture

Exposed mortar, playing with the texture is often used in contemporary architecture to create a distinct, industrial, or rustic look.



02 /

# Dry mortar solutions

For when you need a consistent supply of high-quality mortar throughout your construction project.

Manufactured under a third-party accredited factory production control system, our dry mortar guarantees the perfect blend of colour, consistency, and workability.

Delivered pre-mixed, eliminating the need for on-site mixing and ensuring consistent results every time. Available in three convenient supply methods:



**Silos:** For large-scale projects where a constant supply of mortar is needed.



**Bulk bags:** For medium-sized projects that do not have the scale for silos.



**25kg bags:** For small-scale projects including repointing.



## Benefits

### Consistent Strength and Workability

Our high-quality constituent materials are carefully selected and blended under rigorous factory-controlled conditions. This ensures that every batch of mortar delivers consistent strength and workability, allowing for smoother application and better adhesion.

### Minimise waste and labour costs.

Eliminates the need for on-site mixing, saving time and money. You'll also reduce waste, as there is no need to mix more mortar than you need.

### Durability

Durable and long-lasting, thanks to our controlled production process and the entrainment of controlled amounts of air, which make it less susceptible to frost attacks.

### Minimal community disruption

The silo mixer unit's minimal noise output makes it ideal for use on sites near schools, hospitals, and residential areas.



Easy to use –  
Just add water



Compatible with a  
wide range of bricks  
and blocks



BS EN 998-2  
Compliant



CEMEX mortars are available in a wide range of shades and colours to enhance the appearance of your project.



03/

# Silo solutions

A convenient way to meet your mortar needs on large-scale housing and commercial projects.

Our silos combine the advantages of factory-produced mortar with advanced technology to provide a highly efficient solution to meet your mortar requirements.

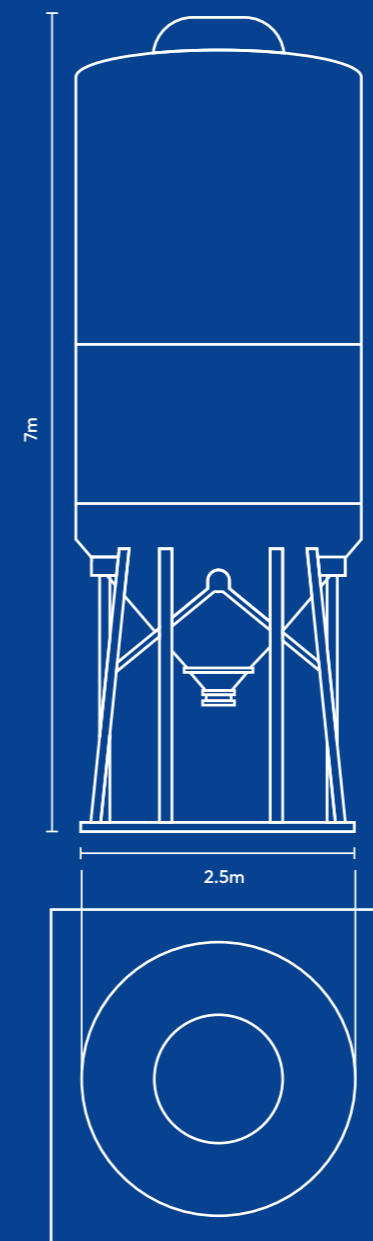
The silos are delivered directly to your site by our versatile rigid and articulated tankers. With delivery capacities of up to 33 tonnes, each silo is equipped with a mixing unit. Once in place, you can produce mortar at the touch of a button.

## Silo Training

Our dedicated silo team and regional field engineers will support you with specification, placement and comprehensive training to ensure that all operatives are fully equipped and that site personnel have complete control over the consistency and workability of every batch, minimizing downtime and ensuring a smooth workflow.

## Site Assessment

To ensure a seamless project schedule, we offer a free of charge site assessment. Working with you to identify and address any potential issues to proactively prevent delays. Additionally, we provide guidance on the most suitable location for your silo, helping you to optimise efficiency.



## Benefits

### DRY MORTAR - SILO

- Capable of holding around 33 tonnes of material equivalent to 23m<sup>2</sup> of wet mixed mortar
- 2 methods of venting displaced air
- Low level material probe and warning light (set at approximately 10 tonnes)
- Material vibrator
- Single phase control panel which will invert the electricity supply to a powerful 3-phase mixing motor
- Mixing screw with auto-mix and auto-clean facilities
- 5m reinforced power cable
- Integral water pump.

### SITE REQUIREMENTS

- Level concrete base, 3m x 3m minimum size, capable of withstanding 40 tonnes
- Clear, unobstructed access for 44-tonne delivery vehicles.

### ELECTRICAL REQUIREMENTS

- 230V single phase electricity supply provided from a 324 molor rated MCB (40A MCG it not motor rated) backed up by a 30m<sup>2</sup> ACD dedicated to the exclusive use of the silo
- 324 industrial socket output in weatherproof junction box less than 5m from silo.

### WATER REQUIREMENTS

- Provide dedicated water supply via 25m<sup>2</sup> feed to the base of the silo, terminating with a gate valve.



- With one of the largest tanker fleets in the country, we offer a comprehensive replenishment service to keep your silo fully stocked, avoiding any interruptions and downtime.
- Our silos eliminate the need for on-site mixing areas, as all the required material is conveniently contained within the silo itself.
- Our silos are capable of holding up to 33 tonnes of material compared to 23m<sup>3</sup> of wet-mix material.
- One tonne of dry silo mortar is sufficient to lay approximately 1,000 bricks (actual number may vary).

04/

# Bagged mortar

For sites that do not have the scale for a silo, but still require a factory-produced mortar that provides consistency, strength, and durability.

Our bulk bags and 25kg pre-mixed bags provide you with all the same benefits of factory-produced mortar, without the need for a silo.



### Bulk Bags

Our nominal 1 tonne bags are a convenient alternative to site mixing, with a shelf life of up to 3 months. Whether you are building a small garden wall or a large house, bulk bags supply the right amount of mortar for your projects.



### 25kg Bags

Our 25kg weatherproof bags are available in M4 and M12 mortar, suitable for a wide range of masonry applications, including brick laying, block laying, repointing, general masonry repairs, and laying patio and paving slabs. They are available in both natural and a wide range of colours.

M12 Natural Mortar is specifically designed for below ground and DPC environments where increased durability is required.



### Benefits

-  Consistent quality
-  Nationwide delivery
-  Recycled and resealable plastic bags and plastic liner
-  Minimal wastage
-  Ideal for topping and tailing contracts where material is supplied in a silo
-  Compatible with a wide range of bricks and blocks



For full technical information scan here, or visit [cemex.co.uk/bagged-mortars](https://cemex.co.uk/bagged-mortars)





05 /

# ONPOINT

When you're mortar has to be on point.

ONPOINT is a high-performance, gun-injected pointing mortar that is specifically designed for use in precast brick inlay systems and brick slip panels.

Available in a wide range of colours to complement brickwork and enhance the aesthetics of architectural designs in urban areas.



### Benefits



**Reduction of labour costs** through quick gun injection compared to traditional pointing methods.



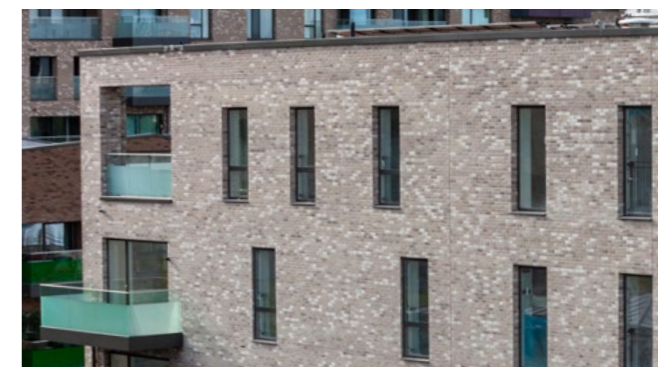
**Eliminates waste** by gun injecting mortar cleanly, deep into the joint.



**Expert mortar support** to help you specify the right mortar for your projects

### Quality

ONPOINT is made with high-quality materials and is factory-blended to ensure consistency and reliability. It is also highly durable and provides high resistance levels in extreme conditions.



### Applications



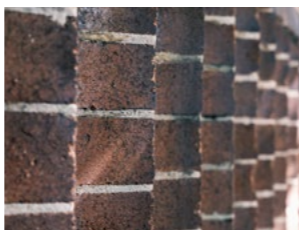
**Precast panels** for commercial or residential developments in urban areas, where there is minimal space for constructions.



**Brick slip panels** For high rises and modular buildings.



**Repointing** existing structures that are being renovated.



**Repointing** of historic and heritage buildings



Find the perfect match (available in over 35 colours) or a bespoke matching service



Delivery available in nominal 1-tonne bulk bags



Delivery available in 25kg bags

For more detail scan here, or visit [cemex.co.uk/onpoint](http://cemex.co.uk/onpoint)



06/

# Coloured mortar

Mortar that makes a statement!

Mortar is often overlooked, but it can make up to 20% of the final building on display. The choice of a high-quality coloured mortar can amplify the aesthetics of brick work, striking a good balance between structural integrity and visual impact.

Cemex's dry mortar is available in a wide palette of colours, with the ability to blend your chosen brick or make it stand out, Cemex's dry mortar can transform your architectural project into a visual statement.

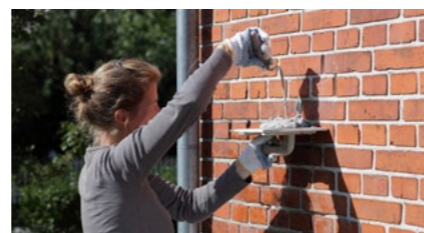
## Applications



Commercial projects



Multi and single home residential developments



Pointing & Patch Repair Jobs



General Masonry Projects



Small Builds & DIY Projects

## Benefits



**Offers consistency** - A consistent factory-produced coloured mortar that will ensure you always get the same colour no matter how many batches you require



**Colour match** - we can help colour match the mortar you require



**Pull from our expertise** - We offer a partnership approach to understand and find the best solutions for your desired results

Black Dark	Doveholes White	Lilac Dark	Mid Brown Light	Red Brown Medium	Tudor Brown Dark
Black Light	Golden Brown Dark	Lilac Light	Mid Brown Medium	Red Dark	Tudor Brown Light
Black Medium	Golden Brown Light	Lilac Medium	Purple Dark	Red Light	Tudor Brown Medium
Cream Braintree light	Golden Brown Medium	Marigold Dark	Purple Light	Red Medium	Yellow Dark
Dark Brown Dark	Light Brown Dark	Marigold Light	Purple Medium	Terracota Light	Yellow Light
Dark Brown Light	Light Brown Light	Marigold Medium	Red Brown Dark	Terracotta Dark	Yellow Medium
Dark Brown Medium	Light Brown Medium	Mid Brown Dark	Red Brown Light	Terracotta Medium	

Our full range of colours can be viewed online.



Delivery available via silo



Delivery available in nominal bulk bags



Delivery available in 25kg bags

Order our colour swatch book to help you plan for your perfect colour match. Order yours online at [cemex.co.uk/coloured-mortar](http://cemex.co.uk/coloured-mortar)





## Case Study

## Canada Gardens, Wembley Park

## Key facts

- Product: Dry Silo Mortar: M6 Dove Holes White
- Construction period: 2018 – 2020
- Volume of mortar provided: 1,500 tonnes
- Client: PPR
- Subcontractor: John Sisk

07 /

## Specification support

The foundations to your projects.

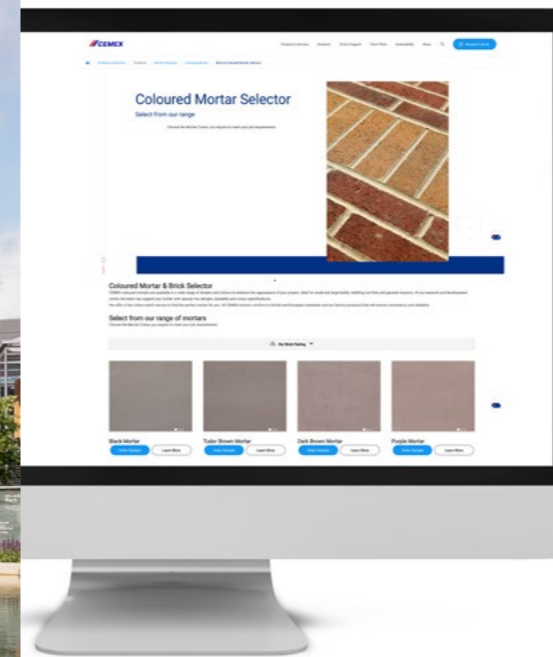
Our team of experts can provide you with guidance in helping you make informed decisions about the mortar you choose. Tap into our expertise and resources to maximise your projects potential.

## Technical Support

Our specification managers, with the support of our technical team at the research and development centre, will work with you to understand your vision and project at a deep level so we can help you select a mortar that will enhance the overall aesthetics and have the proven technical properties.

## The three-step journey to the perfect mortar

- STEP 1 Colour Swatchbook:** A comprehensive guide to a full range of colour mortars.
- STEP 2 Sample Stick folder:** A full range of samples to use against your chosen bricks, see how the colours blend and contrast to the brick work.
- STEP 3 Trial Sample Request:** Before final specification, we can send you a sample bag of mortar for the creation of a brick slip panel for approval.



Our specification team can help you with special mix designs, durability, and colour specifications. We offer a free colour match service, and tools to find the right colour to complement your design.

## Brick and Mortar Selector:

In the meantime, you can use our Brick and Colour mortar selector to see how our coloured mortar works with popular brick colours.

[cemex.co.uk/brick-and-coloured-mortar-selector](https://cemex.co.uk/brick-and-coloured-mortar-selector)



08/

# Cemex Go: Connect the way you build



CEMEX Go Mortar is a digital platform for contractors that transforms the way you manage your mortar. With CEMEX Go Mortar, you can:



**Increase your productivity** – Reduce your administrative tasks so you can focus on your core business



**Make better business decisions** – Review real-time and detailed information needed for more effective decision-making



**Have better control of your business** – Manage your Cemex account with full visibility and control.



## Features

- **Quote and repeat ordering system:** Request quotes and repeat orders at a time that's convenient for you
- **Order Tracking:** Track the progress of your orders from request to completion
- **Take control of your documentation:** Eliminate lost paperwork with CEMEX GO Mortar site documentation hub
- **Transparent account history:** Full accessibility to past and current orders.

“The CEMEX GO Mortar platform is an asset to our company! It is incredibly simple and easy to use, and it's quite key to have a history of our orders all in one place, available for us to access at any time we need it. It also enables quick and easy repeat orders, saving us having to repeat information.”

Ryan Farrell, ECR Construction – Brickwork Contractor



09 /

# Vertua

More sustainable by design



Cemex's dry mortar range now has an embodied carbon reduction of over 30%\*, achieved through innovative productions techniques:

- Use of Vertua cement products
- New admixture technology
- An enhanced production process

Dry mortar sits within our Vertua family of products under the lower carbon attribute, making it easier for you to access and choose more sustainable materials for your projects.

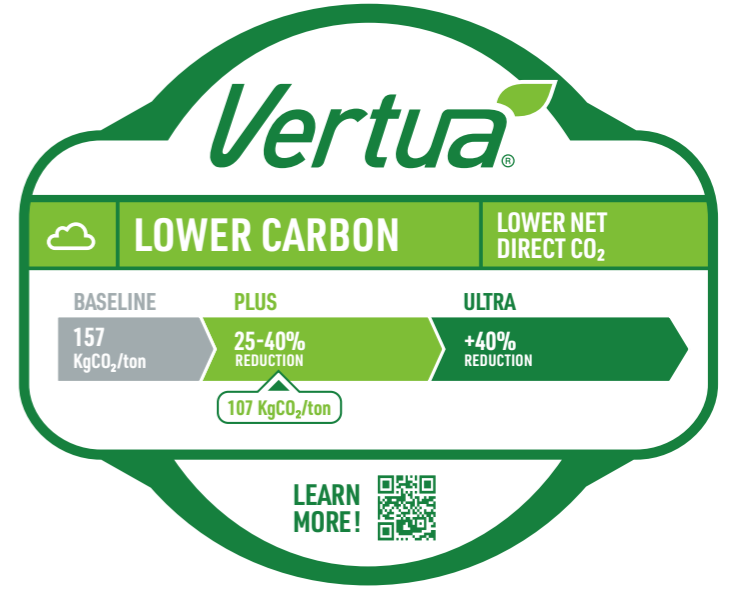


Our Vertua family is a portfolio of products and solutions that address the pressing need to build a better future, a future that is carbon neutral, more sustainable, and circular.

Each product that sits within the Vertua family is assessed and considered to have one or more five attributes:

### Benefits

- Lower Carbon
- Energy Efficiency
- Water Conservation
- Design Optimisation
- Recycled Material



### Why Choose Vertua?

Buildings account for 40% of global greenhouse gas emissions. With 40% of that coming from the raw materials used. As we make more conscious choices to build more sustainably, it is important to consider the materials we use and how they contribute to the impact of the final project.

By understanding the sustainable attributes of different materials, we can make better decisions about how to build a better future.

\*Compared to the carbon content of mortar produced by Cemex UK in 2020. Industry available reference baseline – EC3 – Product EPDs



“A top quality range of colour solutions along with consistency in shade of colour and on time delivery made Cemex the right choice for this prestigious development.”

Flahive Brickwork



### Case Study

## Rochester Riverside Development

### Key facts

- Client: Medway Council and Homes England
- Customer: Countryside properties and Flahive Brickwork

### The Project

Developing over a ten year period, starting in 2018 and ongoing until 2028, Rochester Riverside is a flagship project in the Countryside Properties regeneration programme.

Rochester Riverside will extend from Rochester Bridge to Dust Way, providing not only new homes and jobs for Medway but sustainable benefits to the community including retail and leisure facilities, improved infrastructure, and open spaces.

### Challenge

To embody the aesthetics of the architectural design, our client wanted colour compatibility between the mortar selection and the specified bricks chosen for the project. This posed a challenge due to the number of different brick types specified for the project, with a consistent mortar required to match the various types.

### Approach

Cemex's Specification Managers developed close working relationship with both the customer and the project architect, working to ensure we could facilitate the correct mortar selection.

This was facilitated through the supply of coloured mortar swatches and sticks, and the production of trial panels constructed on site. The approach allowed all key personnel involved in the project to understand how the coloured mortar would look in situ rather than a factory setting.

### Solution

Through the above approach, our experts in mortar made colour recommendations for the project. Following an extensive trialling period, we supplied a selection of coloured mortars and white mortars that complemented the aesthetic qualities of the specified brick.

During the supply stage, we factory produced the mortar to ensure colour consistency and quality throughout, working with the customer to meet all quality and accreditation standards.

Not only did we achieve the objective of an aesthetically pleasing mortar, but we also helped to manage unnecessary waste and time through the supply of a consistent quality.



### Key Takeaway

Through our flexible approach and expertise in mortar, we successfully supplied and delivered multiple coloured mortar on the same large scale urbanised project, giving the architect and client the diverse aesthetics they envisioned.

10 /

# Our commitment to responsible sourcing

All CEMEX products have achieved BES 6001 Responsible Sourcing accreditation.

**BES 6001**  
Responsible Sourcing

BES 6001 accreditation means that all our dry mortar is responsibly sourced, to an independently verified standard that addresses the social, economic, and environmental impacts across the entire supply chain.

Cemex's commitment to sustainable development and ethical and responsible sourcing has been formally recognised through this official accreditation.

By using Cemex UK material products in line with the BES 6001 certification requirements our customers can score more credits under BREEAM, the most widely used environmental assessment method for business. The BES 6001 certification complements a range of other ongoing initiatives at Cemex UK to reduce waste, water, energy use and CO<sub>2</sub> emissions, while increasing the use of alternative fuels and by-products in the manufacturing of building materials.

As a global company, ecologically responsible construction is a priority for Cemex and it is fully committed to the United Nations Sustainable Development Goals, of which five are directly related to our company's business.

Furthermore, the United Nations established 2030 global goals have been embedded into our business model and inform the decisions we make and the work we do every day. We understand and agree with the need for production of building materials to be as sustainable as possible and are committed to contributing to a net-zero carbon society.

It is important to remember that while global cement production (of which over half takes place in China) is responsible for 7% of global CO<sub>2</sub> emissions, UK cement emissions are amongst the lowest in the world at less than 1.5% of all UK emissions; testament to the dedication of the industry to decreasing its impact on the environment.

11 /

# Production

We produce high-quality mortar using carefully selected raw materials, including cement, sand, chemical admixtures, and pigments

We produce high-quality mortar using carefully selected raw materials, including cement, sand, chemical admixtures, and pigments. Our ingredients are mechanically dried at our production plants and then blended to meet your individual specifications, and transported to your site in bulk tankers, or small or bulk bags.

Our production process is closely controlled to ensure that our mortar is consistent and produced in accordance with our 3rd party audited process and meets our high standards for quality and durability.





12 /

## Logistics and delivery

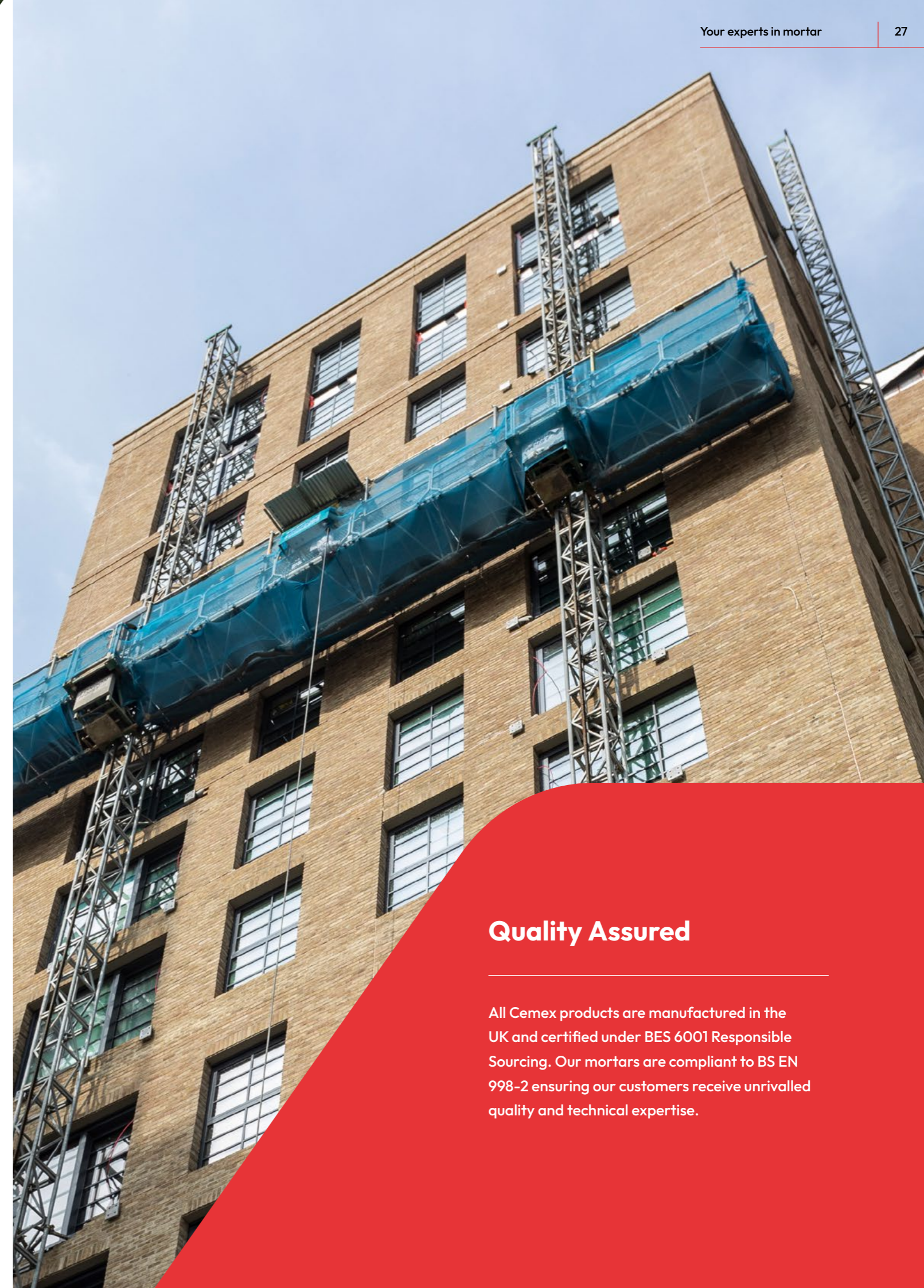
**We deliver mortar in bulk tankers to your site silos, which are connected to power and water.**

Once connected, the built-in mixer unit provides you with quality-controlled material in the required amounts and to the correct workability. Mortar is produced at the touch of a button reducing labour intensity and encouraging on-site health and safety.

To maintain continuity of production, depleted stock is recharged by bulk powder tanker with the silo remaining onsite.

Each silo is capable of producing 6m<sup>3</sup> of mortar per hour. We are also able to supply customer with durable 250lt tubs, which can be lifted by forklift and crane, to facilitate product on-site.

The silo's take up a relatively small area on site, meaning space is effectively used, and supporting developments in an urban environment where space is minimal.



## Quality Assured

All Cemex products are manufactured in the UK and certified under BES 6001 Responsible Sourcing. Our mortars are compliant to BS EN 998-2 ensuring our customers receive unrivalled quality and technical expertise.

For further enquiries or to  
place an order contact us:

01926 811 333

[gb-enquiries@cemex.com](mailto:gb-enquiries@cemex.com)

[cemex.co.uk/mortar](https://cemex.co.uk/mortar)

# EXPERTS IN MORTAR™

Cemex is a global leader in the building materials industry providing high-quality, innovative products and exceptional service to both customers and the community in the most sustainable and efficient way possible. Cemex UK Operations Ltd, Cemex House, Binley Business Park, Harry Weston Road, Coventry, CV3 2TY

© 2023 Cemex Innovation Holding Ltd., Switzerland,  
All Rights Reserved

Follow us

